



Brainline
Learning World

2017

A brighter future through distance education with Brainline

2017 Products

Version 2.2

Let's get started!

1 Browse through our products and services in this guide.

2 Choose an option that suits your needs, or contact our friendly customer care consultants at +27 (0)12 543 5000 if you need more information.

3 Enrol online at www.brainline.com/enrol

4 Enjoy peace of mind knowing that you are set for a year of the highest quality distance education.

1. The fees in this document are effective from 10 December 2016.
2. If you are an existing client and you wish to enrol for 2017, your account for 2016 needs to be settled.
3. Be sure that you read and understand the new Cancellation and Refund Policy in the Brainline Standard Agreement before you continue with the enrolment.
4. Study material and access to www.brainONLINE.com will be available from January 2017.



A warm welcome

A warm welcome to Brainline Learning World. An exciting learning experience lies ahead as you embark on your journey with us.

Distance education is a challenging, yet rewarding, learning adventure. It accommodates learners' unique educational needs, which enables them to work towards their National Senior Certificate. Brainline does not teach the child, but rather provides the opportunity for self-motivated and disciplined learners to develop their potential.

At Brainline, we are committed to providing quality e-learning education and assessment services to distance education candidates from Grade R to Grade 12. Because we deliver a quality

curriculum, in line with the National Curriculum Statement, to all grades through cutting-edge technology, and offer world-class online assessment and support, you can count on us to make your distance education journey rewarding.

Completing the school years through Brainline develops skills for lifelong learning, encourages self-motivation, responsibility and dedication, and makes for an overall enjoyable learning experience.

We trust that this prospectus will help you to discover the endless opportunities for distance education towards a National Senior Certificate through Brainline.

The Brainline Team

The Brainline difference



Proudly registered with the IEB

Brainline's registration with the IEB enables you to be assured of quality assessment in accordance with policy. This means that you can trust Brainline to assist you on your journey as you work towards your fully accredited National Senior Certificate.



A wide variety of products for every need

Brainline offers unique products that suit the needs of parents/tutors and learners of all ages who wish to work towards a National Senior Certificate through distance education. This includes Grade R to 12, single subjects as well as an option for adults to achieve their NSC.

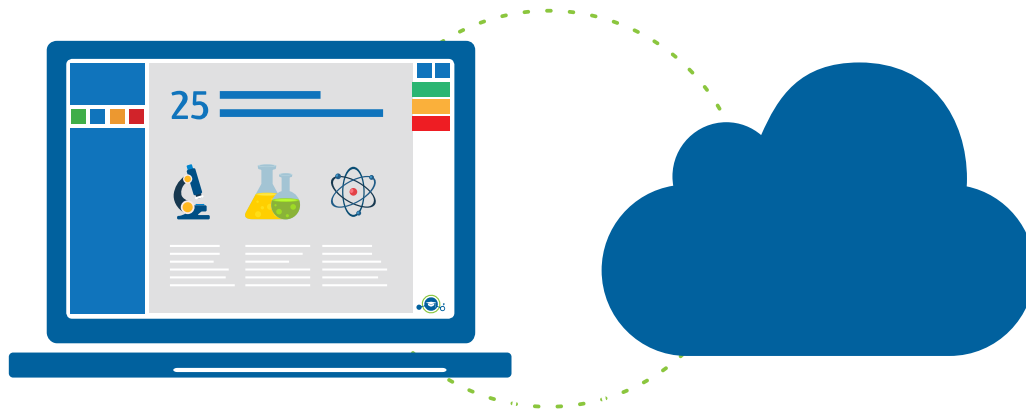


A dedicated & caring Brainline Team

Our friendly consultants in the Customer Care Centre and passionate Subject Advisors always strive to make your educational journey pleasant and enjoyable. That is why you become part of the Brainline family when you enrol with us.



Our curriculum and assessment

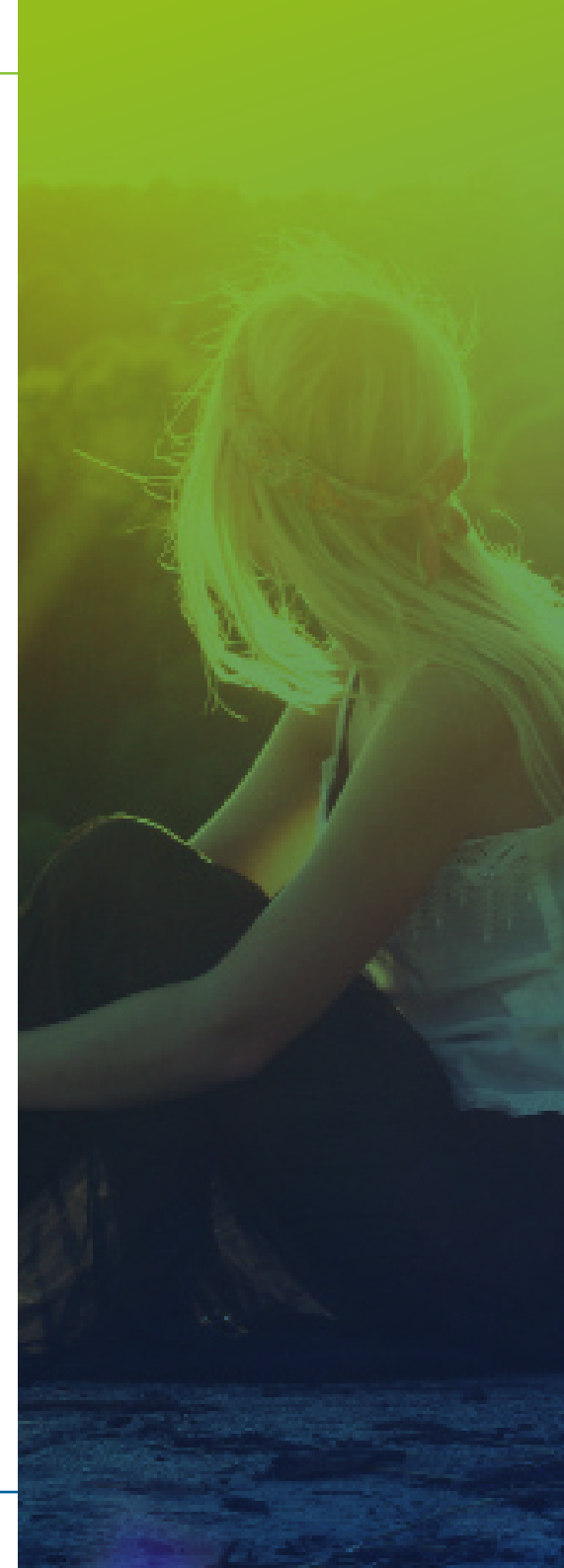


A. The Brainline Curriculum (computer application)

Our curriculum is delivered through the downloadable Brainline computer application. The curriculum is in line with the Revised National Curriculum Statement for Grade 1 to 12, and contains comprehensive learning material as well as teacher's guides. It also enables parents or tutors to assist learners to master the requirements for subjects of their chosen academic year.

B. Formal Assessment via www.brainONLINE.com

Formal assessment is exclusively delivered and managed through your personal profile on www.brainONLINE.com, Brainline's virtual online campus. The online delivery of assessment makes it possible to provide learners with timeous feedback. The learner has 24/7 access to the assessment website, and can track his/her progress as the marks become available.



Unique products that suit your needs.



BrainlineEdu2Go

Grade R, 1 - 7

BrainlineEdu2Go offers a complete curriculum with Self-assessment. Optional Formal Assessment is available in June and/or November to obtain a Brainline Report for Grade 1 to 7.

Page 8 - 10



Brainline (IEB-aligned)

Grade 8 - 12

A complete curriculum and step-by-step assessment throughout the year – the ultimate distance learning experience towards your fully accredited National Senior Certificate.

Page 11 - 15



BrainlineEXPRESS

Grade 8 - 11

Ideal if you want to use your own study material, and complete your SBA portfolio at your own pace. Formal assessment takes place after moderation in November to obtain a Brainline Report.

Page 16 - 17



BrainlineCOMPACT

Grade 10 & 11 (18+)

Complete Grade 10 and 11 in one year, and continue with Grade 12 in the following year to obtain your National Senior Certificate.

Page 18



BrainlineHUB

Grade 10 - 12

BrainlineHUBs are centres in which we accommodate learners for self-study in a relaxed atmosphere with the guidance of a qualified facilitator. Small groups of no more than 12 to a facilitator.

brainline.com/hub

An overview of our products' features

	BrainlineEdu2Go (Grade R, 1 - 7)	BrainlineEXPRESS (Grade 8 - 11)	Brainline (IEB-aligned) (Grade 8 - 12)
Complete study material (Learner's & teacher's guides/memos)	✓	✗	✓
Self-assessment material, in line with study material provided	✓	✗	✓
Access to quality assessment material (SBA portfolio items)	✓	✓	✓
Access to brainONLINE.com and all its features	✓	✗	✓
Marking of SBA items performed by Brainline	✗	✗	✓
Moderation of SBA items performed by Brainline	✗	✓	✓
Return of marked assessments, and access to memos, feedback and discussions	✗	✗	✓
Additional support such as webinars, where applicable	✗	✗	✓
Instructional guidance by subject advisors	✓	✗	✓
Access to Brainline Facebook Groups, brainONAIR and brainONCOMMAND	✓	✓	✓
Final examination and report (online; requires a registered invigilator appointed by you) Green = optional	✓	✓	✓

BrainlineEdu2Go

Grade R, 1 – 7

Edu2Go is our offering for the lower grades and provides the ideal platform to develop a love for independent, lifelong learning.

It enables the parent/tutor to educate the learner on a one-to-one basis through learning material and self-assessment resources designed to let the learner explore, discover and achieve.

A complete curriculum – with guidelines, lessons, assignments, tasks, tests and memorandums – is provided to facilitate the learning process, entirely based on the

requirements of the Department of Education. Optional Formal Assessment is presented in June and/or November at an additional fee, after which the learner will receive a Brainline report.

Edu2Go introduces the learner to an exciting, challenging and rewarding distance learning experience, made possible by the collaborative learning experience in the home/small classroom.

Edu2Go is also ideal for application in the special needs environment, as indicated by the professional practitioner.



A complete curriculum with Self-assessment.



Optional formal assessment in June and/or November.



Convenient, self-paced and allows for flexible school hours.



Access to Brainline Facebook Groups, brainONAIR and brainONCOMMAND.

BrainlineEdu2Go Grade R

Grade R is the first year of the foundation phase of outcomes-based education. It is ideal for developing a firm academic foundation for children aged 4½ to 5½.

Grade R can be purchased anytime of the year, and completed as the parent/tutor wishes.



Learning outcomes

Outcomes include reading and viewing, design, data handling, listening exercises, interpretation, writing, language structure, thinking and reasoning.

Play and learn

Practical activities are applied to develop and promote the main skills the learner needs to acquire.

A range of topics

A wide range of topics is explored to expand the learner's knowledge of the wonderful world around him/her.

ABC and 123

The complete alphabet and number set is learned throughout the curriculum with specific literacy and numeracy learning outcomes.

Anytime and in any order

The 21 modules can be done at any time and in any order, as the needs or circumstances of the learner allow.

Approved curriculum

The curriculum is based on the new South African curriculum, with specific learning outcomes in each module.

Grade R	Price	VAT	Total
21 x full-colour books Plus Brainline Application	R3 763.16	R526.84	R4 290.00
Single book/module	R 184.21	R 25.79	R 210.00
Brainline Application	R2 868.42	R401.58	R3 270.00
School Readiness Test	R 605.26	R 84.74	R 690.00

Enrol online at
www.brainline.com/enrol

BrainlineEdu2Go Grade 1 - 7

Who would ever imagine that your first school day could be in the comfort of your own environment? Edu2Go is a true distance education solution and offers every learner endless opportunities to achieve their best.

January: Receive the curriculum and Self Assessment.

June: Optional Formal Assessment. The learner receives a report.

November: Optional Formal Assessment. The learner receives a report.

Curriculum

Brainline's Edu2Go programme consists of a fully integrated, day-by-day, scheduled curriculum which allows learners to be actively involved and develop a strong love for learning. The lessons and resources – with clear guidelines – enable the parent or tutor to guide the learner through the required modules in order to build a base of knowledge required for full academic development.

Learning material is delivered via the downloadable Brainline computer application. It is advisable to store the completed lessons, as evidence of the learner's progress and performance, in a personal file. You are not required to send these tasks to Brainline.

Self-assessment

Self-assessment, in the form of June and November examinations, is pre-packaged in the Brainline computer application. The parent/tutor may decide when and if a learner should complete these exams, and he/she is also responsible for marking the exams according to a

password-protected memorandum. A formal Brainline report is NOT included in this option.

Optional Formal Assessment

Formal Assessment consists of scheduled examinations in June and/or November, and takes place on the learner's personal profile on brainONLINE.com.

Formal Assessment is optional, but nevertheless an ideal opportunity to assess the learner's progress. Learners registered for formal assessment will receive a formal Brainline Report. We highly recommend that the learner completes at least one assessment (in November) in order to receive a report for the grade achieved.

Report

A formal Brainline Report is issued only when the learner is registered for Formal Assessment in June and/or November. External examinations are taken, which are specifically demarcated for distance education clients in accordance with national policy.

Grade 1, 2 or 3	Price	VAT	Total
Curriculum with Self-assessment	R4 438.60	R621.40	R5 060.00
Optional Formal Assessment (June)	R 780.70	R109.30	R 890.00
Optional Formal Assessment (Nov)	R 780.70	R109.30	R 890.00

Grade 4, 5 or 6	Price	VAT	Total
Curriculum with Self-assessment	R7 008.77	R981.23	R7 990.00
Optional Formal Assessment (June)	R1 228.07	R171.93	R1 400.00
Optional Formal Assessment (Nov)	R1 228.07	R171.93	R1 400.00

Grade 7	Price	VAT	Total
Curriculum with Self-assessment	R7 368.42	R1 031.58	R8 400.00
Optional Formal Assessment (June)	R1 245.61	R 174.39	R1 420.00
Optional Formal Assessment (Nov)	R1 245.61	R 174.39	R1 420.00

Enrol online at
www.brainline.com/enrol

Brainline (IEB-aligned)

Grade 8 – 12

Brainline, in collaboration with the parent, guardian and learner, allows you to take control of how, when and where you study through quality and convenient distance education.

Distance education is exciting, challenging and very rewarding. Brainline is a leading online distance education provider, and offers you a quality self-study curriculum and assessment in

accordance with legislation. This means that you can trust Brainline to assist you on your journey as you work towards your fully accredited National Senior Certificate.

Brainline is registered with the Independent Examinations Board (IEB), known for its high educational standards and outstanding commitment to quality assessment.



A complete curriculum with learner and teacher guides.



Prepares you to work towards your National Senior Certificate.



Scheduled tasks and tests throughout the year (SBA).



Support from Subject advisors and access to Brainline Facebook Groups.



Continuous access to the Internet is required.



An independent invigilator is required during test/exam sessions.

Brainline

Gr. 8 & 9

Learning become more challenging, but is still an adventure! With a wider range of subjects, the learner gets exposed to a more structured learning experience, in preparation for the higher grades to follow.

January: Start to work through the curriculum and complete the SBA requirements on brainONLINE.

March: Term 1 test series
The learner receives a report.

June: Mid-year examination
The learner receives a report.

August: Term 3 test series
The learner receives a report.

November: Final examination
The learner receives a report.

Curriculum

Brainline's curriculum for Grade 8 and 9 consists of a complete curriculum in line with the CAPS, which allows learners to be actively involved and continues to develop a strong love of learning. The lessons and resources enable the parent or tutor to guide the learner through the required modules in order to build on their base of knowledge required for successful academic development.

Lessons, tasks and memorandums are delivered via the downloadable Brainline computer application. It is advisable to store the completed lessons, as evidence of the learner's progress and performance, in a personal file. You are not required to send these tasks to Brainline.

Subjects

- » Afrikaans Eerste Addisionele Taal
- » English Home Language
- » Mathematics
- » Life Orientation
- » Natural Sciences
- » Social Sciences (Geography & History)
- » Economic and Management Sciences
- » Technology
- » Creative Arts

Assessment

Assessment takes place on brainONLINE. This is where we communicate with you, and where you download, complete and upload all your formal assessment assignments. You need to visit brainONLINE at least once a week to stay up-to-date with your studies.

Known as School Based Assessment (SBA), it consists of tasks, PETs, PATs, oral assignments, compulsory practical sessions in some subjects, tests and examinations.

All Brainline's formal assessments are moderated to ensure quality, validity and integrity, thus delivering only the best assessment to our learners.

Tests and exams are completed through brainONLINE in your own environment, under the supervision of a registered independent invigilator.

Grade 8 or 9	Price	VAT	Total
Complete curriculum with full-year assessment	R13 421.05	R1 878.95	R15 300.00
Application Fee for Accomodations (once-off per candidate)	-	-	R 960.00

Literature books for languages are not included in the course fee. The client needs to source and buy it separately (as indicated on brainONLINE).

Enrol online at
www.brainline.com/enrol

Brainline Gr. 10 - 11

Taking control of how, when and where you study is important to prepare you for your NSC final exam. With Brainline, you have all the control you need to give your best and achieve great results.

January: Start to work through the curriculum and complete the SBA requirements on brainONLINE.

March: Term 1 test series
The learner receives a report.

June: Mid-year examination
The learner receives a report.

August: Term 3 test series
The learner receives a report.

November: Final examination
The learner receives a report.

Curriculum

Brainline's curriculum for Grade 10 and 11 is uniquely combined to assist the learner with his/her studies. Study material is supplied electronically, via the Brainline computer application, and through textbooks (in some subjects), and is, and is aligned with the requirements of the IEB (as based on the Revised National Curriculum Statement).

Assessment

Assessment takes place on www.brainONLINE.com. This is where we communicate with you, and where you download, complete and upload all your formal assessment assignments. You need to visit brainONLINE at least once a week to stay up-to-date with your studies.

Known as School-based Assessment (SBA), it consists of tasks, PETs, PATs, oral assignments, and compulsory practical sessions in some subjects, tests and examinations.

All Brainline's formal assessments are moderated to ensure quality, validity and integrity, thus delivering only the best assessment to our learners.

Tests and exams are completed over the Internet in your own environment, under the supervision of a registered independent invigilator.

Achievement and reports

A report is issued after each test/examination series that takes into account the marks obtained for both the School-based Assessment and the examinations.

Promotion

In order to be promoted to the next grade, a learner must achieve:

- » A minimum of 40% or more in 3 subjects, of which one should be an official language at Home Language level.
- » A minimum of 30% or more in 3 additional subjects.

Admission requirements

An official report is required, and evidence of the learner's SBA may be necessary. A learner must successfully complete their (current) grade in order to proceed to the following grade

When a learner enrolls with Brainline from another institution, and Brainline cannot determine the validity and/or integrity of the report, the learner might be required to complete a bridging course in all the subjects for that grade before he/she is approved to study with Brainline.

Subject choices and additional requirements on page 15.

Grade 10	Price	VAT	Total
Full course (7 subjects)	R17 368.42	R2 431.58	R19 800.00
Single subject and exam	R 3 421.05	R 478.95	R 3 900.00
Bridging exam (7 subjects)	R 4 236.84	R 593.16	R 4 830.00
Supplementary exam	R 1 280.70	R 179.30	R 1 460.00
Practical Fee: Consumer Studies***	R2 017.54	R 282.46	R 2 300.00
Application Fee for Accomodations (once-off per candidate)			R 960.00

*** Practical fees for Consumer Studies should be paid into a different account. Contact info@faithfoods.co.za for more information.

Grade 11	Price	VAT	Total
Full course (7 subjects)	R17 736.84	R2 483.16	R20 220.00
Single subject and exam	R 3 421.05	R 478.95	R 3 900.00
Bridging exam (7 subjects)	R 4 236.84	R 593.16	R 4 830.00
Supplementary exam	R 1 280.70	R 179.30	R 1 460.00
Practical Fee: Consumer Studies***	R2 017.54	R 282.46	R 2 300.00
Application Fee for Accomodations (once-off per candidate)	-	-	R 960.00
Late Applications penalty (post Oct.)	-	-	R 1 700.00

Brainline Grade 12

This is your most important year – your time to shine! All the hard work and dedication throughout Grade 12 will be worthwhile once you've received your authentic NSC!

January: Start to work through the curriculum and complete the SBA requirements on brainONLINE.

March: Term 1 test series
The learner receives a report.

June: Mid-year examination
The learner receives a report.

August: Preliminary examination
The learner receives a report.

November: Final examination
The learner receives a report.

Curriculum

Brainline's curriculum for Grade 12 is uniquely compiled to assist the learner with his/her studies. Study material is supplied electronically, via the Brainline computer application, and through textbooks (in some subjects), and is aligned with the requirements of the IEB (as based on the Revised National Curriculum Statement).

Assessment

Assessment takes place on www.brainONLINE.com. This is where we communicate with you, and where you download, complete and upload all your formal assessment assignments. You need to visit brainONLINE at least once a week to stay up-to-date with your studies. Known as School-based Assessment (SBA), it consists of tasks, PETs, PATs, compulsory oral assignments and examinations in both languages, and compulsory practical sessions in some subjects, tests and examinations.

Apart from the final IEB NSC examination, which needs to be written at a designated exam centre at the end of the year, all tests and exams are completed over the Internet in your own environment, under the supervision of a registered independent invigilator.

Achievement and reports

FA report is issued after each test/examination series that takes into account the marks obtained for both the School-based

Assessment and the examinations. The results for the IEB NSC examination are published in major newspapers, and learners receive their Certificates as soon as Brainline receives it from Umalusi.

Promotion

In order to qualify for a National Senior Certificate, a learner must achieve a minimum of 40% or more in 3 subjects (one of the 3 subjects must be an official language at Home Language level) and a minimum of 30% or more in 3 other subjects. In order to qualify for further study toward a Higher Certificate, Diploma and Bachelors Degree, better results are required. Visit <http://www.ieb.co.za/School/nsc.php> for more information.

Admission requirements

A learner has to present a pass report for Grade 10 and 11 in order to register for Grade 12. These reports have to be valid and need to comply with accreditation standards.

When a learner enrolls with Brainline from another institution, and Brainline cannot determine the validity and/or integrity of the report, the learner might be required to complete a bridging course in all the subjects for that grade before he/she is approved to study with Brainline.

Subject choices and additional requirements on page 15.

Grade 12	Price	VAT	Total
Curriculum & course (7 subjects)	R21 201.75	R2 968.25	R24 170.00
Single subject (incl. exam fee)	R3 859.65	R540.35	R4 400.00
Accommodations: Application Fee (once off per candidate)			R 960.00
Late Application Fee			R1 700.00
Invigilation Fee (per hour) at separate venue			R85.00
IEB NSC Exam Fee (7 subjects)			R5 650.00
IEB NSC Exam Fee (single subject)			R 950.00
Practical Fee: Consumer Studies***	(compulsory)	-	R2 300.00
Practical Fee: Life Sciences	(compulsory)	-	R720.00

Grade 10-12 literature books for languages are not included in the course fee. The client needs to source and buy it separately (as indicated on brainONLINE).

Enrol online at
www.brainline.com/enrol

*** Practical fees for Consumer Studies should be paid into a different account. Contact info@faithfoods.co.za for more information.

Brainline Subject choices for Gr. 10 - 12

To qualify for a National Senior Certificate, you should complete 7 subjects: one Home Language, an Additional Language, Mathematics or Mathematical Literacy, Life Orientation, and a minimum of 3 NSC approved subjects.

Languages (choose 2)

- » Afrikaans Huistaal
- » Afrikaans Eerste Addisionele Taal
- » English Home Language
- » English First Additional Language
- » isiZulu First Additional Language

Mathematics (choose 1)

- » Mathematics (full)
- » Mathematical Literacy (basic)

- » Life Orientation (compulsory)

Additional subjects (choose 3)

- » Accounting
- » Agricultural Sciences
- » Business Studies
- » Computer Applications Technology
- » Consumer Studies
- » Engineering Graphics & Design
- » Economics
- » Geography
- » History
- » Life Sciences
- » Physical Sciences
- » Tourism
- » Equine Studies (NEW!)
- » Visual Arts (NEW!)
- » Dramatic Arts (NEW!)
- » Music (NEW!)

University entrance requirements

Find all the information you need about application requirements at South African Universities:

<http://www.education.gov.za/FurtherStudies/Universities/tabid/393/Default.aspx>

Accounting

- » Full Mathematics is compulsory.

Economics

- » Full Mathematics is recommended.

Languages

- » You need to attend a compulsory scheduled oral session in Grade 12 at one of our five branches.

Computer Applications Technology

- » Requires Microsoft Office Professional 2010 - Office 365 Home Premium (must contain full versions of Word, Excel, Access and PowerPoint).
- » Compulsory practical examination in Grade 12 at a Brainline branch as arranged.

Consumer Studies

- » You need to attend compulsory practical sessions in Grade 10 - 12 at Brainline in Pretoria. Additional fees apply.

Engineering Graphics and Design

- » Additional software required: TurboCAD 21 Deluxe.

Life Sciences

- » You need to attend compulsory practical sessions in Grade 12 at Brainline in Pretoria.
- » Additional fees may apply.

Physical Sciences

- » Full Mathematics is compulsory.

Agricultural Sciences

- » Life Sciences is recommended.

Music

- » The learner should have their own instrument, at least passed Grade 2 theory and practical from an Accredited Examination Board, as well as taking private lessons that are focussed on at least Grade 3 theory and practical level.



BrainlineEXPRESS

Grade 8 – 11

BrainlineEXPRESS is an affordable product, which is designed to give you the freedom to complete your School-based Assessment (SBA) portfolio at your own time and pace.

You can source and use your own study material, while we provide you with the minimum assessment items required to complete the academic year.

You need to mark these SBA components upon receiving access to the memorandums, before you can submit your physical portfolio to us for moderation in August.

Should the moderated SBA portfolio comply with our standardisation and plagiarism policies, you may choose to write the final examination as the final requirement for a Brainline report.

This product is ideal for clients who are accustomed to unschooling and wish to meet the academic requirements for the New National Senior Certificate.

BrainlineEXPRESS is ideal for application in small private school that are working towards their accreditation as a high school, as it allows them to utilise their own resources more economically.



Source and use your own curriculum and resources.



You are responsible for the marking of the portfolio.



Complete the SBA components at your own pace.



Internet access is only needed during the final examination in November.

BrainlineEXPRESS Gr. 8 - 11

BrainlineEXPRESS is ideal if you want to use your own study material, and complete your portfolio at your own pace, but still have the option to get a report — at a very affordable fee.

January onwards: Receive the SBA package

July: Receive access to the protected memorandums. Mark your SBA components.

August: Submit the portfolio to Brainline.

November: Enrol for the examination to receive a Brainline report.

Curriculum

Enjoy the freedom to source your own curriculum/study material. With BrainlineEXPRESS, you do not receive any study material from Brainline.

SBA package

When you enrol for BrainlineEXPRESS, you receive a quality School Based Assessment (SBA) package for each subject, which includes all the tasks and tests needed to complete your portfolio for the grade. You can print and complete these items on paper, at your own pace, without relying on the Internet. You need to keep your completed items neatly in your BrainlineEXPRESS file, ready for submission for moderation in August.

Marking of your SBAs

During July, you will receive the password for all the memorandums of the SBA components. Your parent or tutor will have two weeks to mark these components, after which you can deliver it at Brainline on the arranged date for moderation.

Moderation

Your portfolio will be moderated by Brainline, according to our standardisation and plagiarism policies. This means that plagiarism and copying is expressly prohibited. Standardisation requires alignment of your final mark with the result of your final examination.

Final examination

You have the option to register for the final examination at an additional affordable fee. This will give you access to brainONLINE.com, our assessment website.

The final examination takes place at the end of the year. This is accessed online, in your own environment and under the supervision of your own nominated and independent Brainline-registered invigilator. Final examination papers are marked and moderated by Brainline.

Report

You will only receive a Brainline report if you have registered for and completed the final examination, as part of your SBA portfolio.

Grade 8 or 9	Price	VAT	Total
BrainlineEXPRESS SBA package	R4 078.95	R571.05	R4 650.00
BrainlineEXPRESS Final Examination	R3 649.12	R510.00	R4 160.00

Grade 10 or 11	Price	VAT	Total
BrainlineEXPRESS SBA (7 subjects)	R5 105.26	R714.74	R5 820.00
Final Examination (7 subjects)	R3 649.12	R510.88	R4 160.00
BrainlineEXPRESS SBA (single subject)	R719.30	R100.70	R820.00
BrainlineEXPRESS SBA (single subject)	R508,77	R71.23	R580.00

Grade 10-12 literature books for languages are not included in the course fee. The client needs to source and buy it separately (as indicated on brainONLINE).

BrainlineCOMPACT Gr. 10 & 11

BrainlineCOMPACT allows you to complete Grade 10 and 11 in one year, preparing you to continue with Grade 12 in the following year.

January: Start with Grade 10 (brainline10COMPACT)

June: Grade 10 final examination

July: Start with Grade 11 (brainline11COMPACT)

November: Grade 11 final examination

BrainlineCOMPACT Grade 10 & 11 in one year

Curriculum

BrainlineCOMPACT is uniquely compiled to assist the learner with his/her studies. Study material is supplied via the downloadable Brainline computer application and textbooks (for some subjects), and is aligned with the requirements of the IEB (as based on the Revised National Curriculum Statement).

Assessment

Assessment takes place on www.brainONLINE.com. This is where we communicate with you, and where you download, complete and upload all your formal assessment assignments. You need to visit brainONLINE at least once a week to stay up-to-date with your studies.

Except for the final exam in Grade 12, all other exams are completed over the Internet in your own environment, under the supervision of a registered, independent invigilator.

Admission requirements

Candidates applying for this course should be over the age of 18, and have basic computer skills.

Promotion

In order to qualify for a National Senior Certificate, a learner must achieve a minimum of 40% or more in 3 subjects (one of the 3 subjects must be an official language at Home Language level) and a minimum of 30% or more in 3 other subjects. In order to qualify for further study toward a Higher Certificate, Diploma and Bachelors Degree, better results are required. Visit <http://www.ieb.co.za/School/nsc.php> for more information.

Achievement and reports

For Grade 12, a report is issued after the exam in June, as well as after the Preliminary Examination. These Brainline reports include the marks obtained from the School-Based Assessment, as well as the Preliminary Examinations. The results for the IEB NSC examination are published in major newspapers, and learners receive their Certificates as soon as Brainline receives them from Umalusi.

Subject choices & additional requirements on page 15.

BrainlineCOMPACT	Price	VAT	Total
BrainlineCOMPACT Grade 10	R7 236.84	R1 013.16	R8 250.00
BrainlineCOMPACT Grade 11	R7 236.84	R1 013.16	R8 250.00

Grade 10-12 literature books for languages are not included in the course fee. The client needs to source and buy it separately (as indicated on brainONLINE).

Additional information

Additional information

A minimum deposit of 25% is payable at enrolment. The balance is payable via a monthly debit order, or the total amount may be paid at once.

You'll have to give consent that Brainline Learning World may use your personal details to do a credit bureau enquiry to confirm whether the account holder will be able to commit to the payment responsibilities. Brainline also requests a valid proof of residence from the account holder to verify the physical address.

Cancellations: Please refer to the UPDATED Cancellation and Refund Policy in the Brainline Standard Agreement. Learners who fail to continue with or complete the course, for whatever reason, will still be liable for payment of the course fee and any/all outstanding payments.

Computer requirements

- » Access to the Internet
- » Pentium 4 2.0 GHz or newer CPU (i3, i5 or i7 is recommended)
- » At least 2GB RAM
- » 10+ GB of free hard drive space
- » Windows 7, Windows 8, Windows 10 or newer
- » Black laser printer and scanner (All-in-one printer and scanner is advisable)

Internet requirements

Remember that your computer needs to be connected to the Internet to activate the learner's profile, and at least once every 30 days in order to keep the Brainline programme active. Internet access is also required to download possible curriculum updates throughout the year.

You will have to visit brainONLINE.com regularly to stay informed, download tasks and tests for formal assessment, and to download possible curriculum updates, should they become available. When looking at Internet options, 1GB per month will be more than enough. Be careful when signing a contract, which might be costly and might bind you for a long period of time. There are many Internet service providers that offer good deals to suit your pocket.

Social activities

Throughout the year, Brainline hosts a number of special events. From camps, tours and day trips, to a glamorous matric farewell at the end of the year. There are loads of opportunities to make new friends and have lots of fun!

Our branches and contact information

Pretoria Montana (Head Office)

Physical Address:	Contact Details:	Office Hours:
215 Veronica Street Montana Gauteng South Africa 0182	Tel: +27 (0) 12 543 5000 Fax: +27 (0) 866 55 44 33 info@brainline.com	Monday – Thursday: 08:00 – 16:30 Friday: 08:00 – 16:00

Rivonia JHB

Physical Address	Contact Details:	Office Hours:
The Pavilion Office Park, Block A 12 Wessel Road Rivonia 2128	Tel: +27 (0) 12 543 5000 Cell: 076 414 2774 info@brainline.com	Monday – Thursday: 08:00 – 16:30 Friday: 08:00 – 16:00

Bloemfontein

Physical Address:	Contact Details:	Office Hours:
Baysvillage Shopping Centre Milner Road Bayswater 9301	Cell: 071 424 1412 Tel: +27 (0) 12 543 5000 bloem@brainline.com	Monday – Thursday 08:00 – 13:00

Stellenbosch

Physical Address:	Contact Details:	Office Hours:
Office 8 The Woodmill Vredenburg Road Stellenbosch 7600	Tel: +27 (0) 12 543 5000 Cell: 073 062 5604 cape@brainline.com	Monday – Friday: 08:00 – 16:30

Umhlanga Ridge

Physical Address:	Contact Details:	Office Hours:
Shop 2A Manhattan House Twilight Street Umhlanga Rocks	Cell: 071 424 9092 Tel: +27 (0) 12 543 5000 E-mail: kzn@brainline.com	Monday – Thursday 08:00 – 16:30 Friday: 08:00 – 16:00



Brainline
Learning World

